



APRIL NEWSLETTER

Next Meeting **Tuesday** 4th

7pm Beenligh Bowls Club

11 Hanover St, Beenligh

Editor Trevor Saunders 33988733 - 0418708858 tgkmsaunders@gmail.com

www.sbsfc.org PO Box 5057, Eagleby 4207

Next Meeting

The next trip being to the southern bay area (Macleay, Coochiemudlo, Russell) with Snapper the prime target if the fresh run off doesn't continue (Kev Ford tips it will clear). Kev will be passing on some of his expertise of fishing this area, which can be pretty well applicable in the rest of the bay. DVD's again, hopefully working on our laptop this time. We have just got back from Cania Dam, with Cyclone Debbie close behind, but we managed some nice Bass before leaving in the rain. Some of the action on DVD, plus a side trip looking for a very interesting mining area.

Upcoming Club Trips

Southern Bay – April 22nd Fishing the southern bay islands, Snapper, Flathead, Bream, possibly Tailor the target species. Weinam Creek boat ramp suggested launch place with Kev Ford the trip captain.

Trip Sheet for above

SBSFC CLUB TRIP – SATURDAY 22/04/2017

Macleay Island - Trip Captain TBA

Tide Times - Pott's Point (Approx.)_High 5.02 AM - 2.44m, Low 12.02 PM - 0.53m Plenty of run

Launching - Redland Bay Ramp – Weinam Creek (off Banana Street) Launch at day break or before first light

Safety Gear - Ensure you have all the correct safety gear on board - *Refer to QLD Recreational Boating & Fishing Guide*

Species - Snapper- Target Species, Flathead over weed beds or Bream in shallows, Mulloway (Likely)

Fishing Areas

Suggest that smaller boats fish Macleay Island area as if wind gets up it is only a short run back to Redland Bay Ramp. Bigger boats can fish Macleay Island & then move on to Peel Island if weather OK. Kayaks can launch from Victoria Point Boat ramp near the Coochie Island Ferry terminal.

Macleay Island - Fish sunrise at Potts Point, use Soft Plastics over the rock/reef areas and out to 18ft. Drift the channel edges drift SP's on or very near the bottom off the Red Beacon Drift deeper areas North East of Potts Point between green marker and jetty. Drift down the channel to the Iron Stem. (See the Map) Salt Works is likely to be crowded with Prawners

Coochie Artificial Reef - NE Tip of Coochie. North of the Red Marker on the NE corner

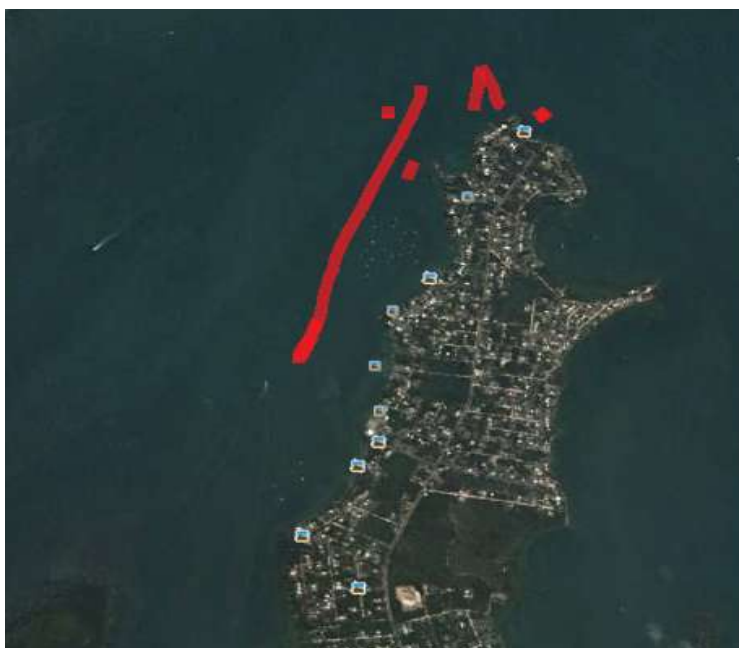
SW Rocks at Peel Island - Other Areas around the Southern side of Peel

Fishing Gear For Snapper- Soft plastics in the 4-5" range and jigheads 1/6oz to 1/4oz & #3/0 to #5/0 hooks or your favorite bait set up. Also does hurt to have a 3" Minnow rigged as well. Mulloway will take the same size plastics as snapper.

Radio Contact

For those with radios- Please bring them. We will try Channel 17 to start with, may move to another channel if there is traffic on 17

Weather - At this stage looks really good, If the weather is a problem on the day contact trip captain for alternate fishing location.



Southern Bay – May 14th Giants Grave, Logan River and adjoining area

Again the same species as above, with the possibility of some Tailor coming through on a making tide. Lloyd Wilmann the captain.

Mid Year Dinner – June 3rd at Fitzy's, Loganholme

John Eldred needs final numbers this meeting

Pumicestone Passage (Bribie) - June 16/17/18th

Some research still to be done on this one, accommodation wise, and having someone with experience in the area. Neil McNeil is the trip captain.

Trip Reports

None, as the Tweed went under the rushing, brown waters.



Not the Tweed, but closer to home. The Albert at the Paterson Road ramp (courtesy of Ray on his morning walk)

Club Member's Tips

Still waiting for some!!! But, due to the non participation I'll do another one. It's not hard, just think of something fellow members might want to know.

Which Snap clip to use?

Snaps and snap/swivels are the most used item of terminal tackle, especially for a lure fisherman. Snaps are not necessarily snaps, and certain criteria dictate on the type to use. The swivel, I never use one with a swivel. 99.9% of lures wobble, they don't twist (trout spinners excepted) so the old reasoning (stopping the lure twisting the line) is a furphy. A

swivel just adds more metal in front of a lure, and it can affect the action. Use too large a snap on too small a lure, the same can happen. Another one is that you need the swivel to engage with your tackle back when trying to unsnag a lure. You need the retriever to engage the hooks, not the swivel. The only lures I don't use a snap for, are jig heads, spinner baits and surface lures. The first two, normal knots, and surface lures, a loop knot.



The above are the commonly used types. The duo lock are the ones that I mainly use. #1 for most estuary and freshwater species, with up to 4kg line, #2 if I was fishing for larger species with up to 8kg line, and the #3 for up to 15kg. I have never have had one fail (if you do them up properly). Cross locks are the goto snap for Barra, that have a propensity for opening snaps. Coast Lock snaps are popular in the largest sizes for game fishermen, where the other types aren't made large enough.

A Week at Cania Dam by Trev (the Rain Whisperer)

A couple of weeks ago, Glenys says "I'm bored, how about we go fishing for a week". My answer was "Do you really want to go tenting it again after the wet, windy trip to SA? I thought we were going to wait for the camper van we had ordered to arrive". I'm not really happy with short notice for a week away. I'm the type that wants a little more time to prepare. So it was all systems go, re arranging work, grandson care etc. and it was off to Cania Dam.

Now the last and only time that we had been to Cania was about 10 years ago. It was down to about 8% and we only caught a couple of Bass and a Saratoga. This time it was 73% which meant a lot more water to explore. We got away at 5am, spending a couple of hours at Nanango with old friends Norm and June Collingwood before heading north into cloudy skies. Pulling up for a comfort stop at Ban Ban Springs, a traveller told us that they were predicting a cyclone to form in the Coral Sea. Great, we must be drought breakers when we

travel. The rain increased as we went further up the Burnett Highway, absolutely bucketing down at Eidsvold. Arriving at the Cania Big 4 van park at 3.30, it was a damp camp erection.

Next morning, the rain had stopped, but the clouds were still threatening. The dam itself is about 3km up the road from the park, and the concrete ramp was well and truly usable. Cania is one of the most picturesque dams we have fished. All have their own unique features, but Cania has these magnificent sheer sandstone escarpments looming above it. It is often referred to as the Little Carnarvon Gorge. We trolled for about 30 minutes in the main basin, before heading off to look at the upper section. Last time the timber at the top was out of the water. This time there was about 11 to 18m along the course of the creek line. We trolled from the start of the timber, and around a couple of bends. No result, but heaps of fish on the sounder all sitting from the bottom up to about 4m. About 45 minutes passed, a couple of bumps on my lure, and then fish on. Instantaneously, Glen hooked up as well. What a start, a double hook up, both Bass. Glen's was 45cm, mine a couple longer. The biggest Bass we had both ever caught.



For the next hour, it was a hook up or strike as we went over the same spot. The total was 12 Bass with about 6 dropped. All the fish were from 40 to 45cm, full of fight and hitting like express trains. The next day, 3 boats were up on the same area, casting with not a lot of results. We moved up around the bend and decided to work up, casting, along a deep gully. I cast to a stand of spindly trees, using a spinner bait with a soft plastic tail. A weight on the line as if fouled in weed? I cranked faster, to get the lure back to clear the weed? As I

sped up, a savage hit. Another 45cm Bass slugged it out. That Bass hit so hard, it pulled the blade out of the swivel on the spinner bait. Over to other bank, a few logs sloping down into the water, Glen put the lure against them, and bang, another 45 cm fish. We fished up the gully for one more hit, went back out and down, towards the hot spot, another two 45cm Bass trolling.

The next day (3) was our 4wd driving day. We drove back through Monto, up to Kalpower, and down the Dawes Range to the top of the Boyne River (Awoonga Dam's feeder) I had heard about an old copper/gold/silver mine, long abandoned in the ranges, and was keen to find it (one of my pet things) We found the track in, and



after an hour in 4wd and one section (are we going to get up that? she asked) in 1st low range we came on three 4wd's setting up camp near the first of the smelter chimneys. They were from the Rocky 4wd club, in for the weekend to try to find some hitherto missing features in there. A yarn with them helped us find some very interesting mining history. I won't bore you with this, it's on the DVD.

Day 4 on the dam, nothing on the troll at the usual spot. Up to the gully again, casting to lay down timber at the mouth of it. Glen hooked up with the same lure she had been using all week (when she's on a good thing, she won't change) This time a 50cm Yellowbelly. Another Bass on the troll going back. The fish numbers were dropping off.



Day 5, the wind was now getting up, so we cast to banks in the lee of the wind. Three hits, but nothing stuck. Another troll at the top of Bass alley, Glen got slammed, and I mean slammed big time, a short run, and around a snag. There went her now, best, favourite, purple backed, go to, lure. She was so crooked she wouldn't put another on. Back through again, with the same lure, but pink backed, exactly the same thing happened to me on the same snag.

That night, the rain started, Debbie was on the move. A wet pack up, and we were off at 8am, raining all the way home. A great trip, didn't do some things I had planned, fly fishing, looking for Saratoga, but the size of those Bass well and truly made up for it.

Annual Membership Fees (Due by August Meeting every year)

Normal Membership - \$70

Family Membership - \$90

Student over 16 - \$20

Student under 16 (non family) \$15

Junior – \$15

You can pay by cash at a meeting or by direct deposit into BSB 814282 Account 30814236

Any club member wishing to sell gear, please let me know so I can place it in the newsletter

