

# SOUTHERN BRISBANE SPORT FISHING CLUB



Editor: Mal Brown. [brownpipe8@gmail.com](mailto:brownpipe8@gmail.com)

Mobile 0402901511 Home 07 3311 4872

**JUNE NEWS LETTER** Next Meeting .. 4th July 7.00pm Monday..

## Memberships Due!!!!

Reminder from John Eldred on (07) 3272 1605 Mob 0428 724100 [eldred2@bigpond.com](mailto:eldred2@bigpond.com) for the payment of memberships. Cash or EFT are the preferred methods because cheques require a bank visit to deposit and bank fees occur. Also, a reminder for starters for the Burrum Heads that a 50% deposit or payment in full if they prefer is required. Full cost per bed/week is \$140.00 therefore the 50% deposit is \$70.00. Again cash or EFT are the preferred method. Both the trip deposit and the annual dues are due 1/7/2011. Separate EFT deposits into the club account for the membership and trip deposit will make my job easier as will some identification of who is making the deposit. Either an email to me or a comment attached to the EFT transaction will do the trick. Account number: **30814236** BSB: **814282**

## From the Ed

Hi all Looks like you will have to put up with pics from my fishing trips this issue as I have had no articles submitted , Even if its a few pics it will be welcome. You do not have to be worried if its not a Tolstoy Novel, we all like to hear how everyones going and how the fishing has been.

## News Flash !!!! Wyaralong Dam

As I right this news letter today, the Wyaralong Dam site is official open , (1st of July 2011) you can check out the web site for LAFMA and The Mt Joyce Escape Recreation Park as it is also known. It is situated on the Treviot Brook and about 15 ks south of Beaudesert on the Beaudesert and Boonah Road

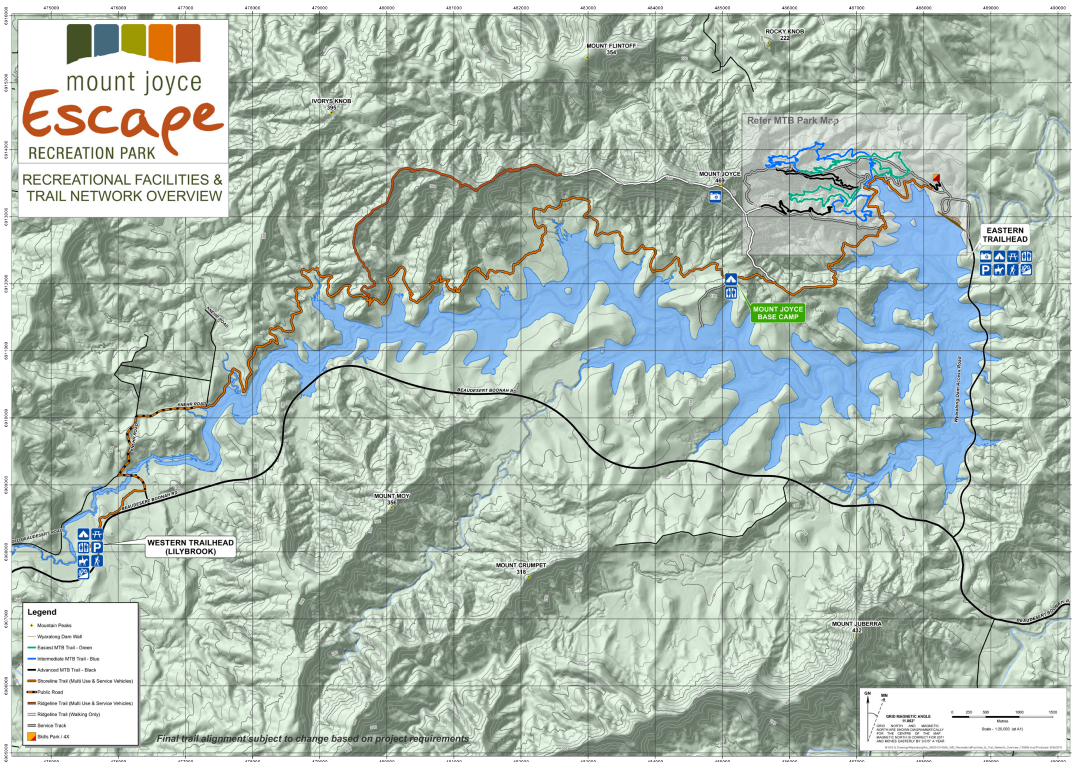
LAFMA site is : [sites.google.com/site/loganalbertfishmanagementass/home](http://sites.google.com/site/loganalbertfishmanagementass/home)

That is the **Logan and Albert Fish Management Association** which used to be known as the **Carbusters**.

For many of SBSFC members this dam, being so close, will be a good freshwater fishing spot when stocked with native fish. It is only open to canoes and dinghies with electric motors and at the moment there is no charge. There is camping available at several spots on the dam one near the dam wall and one at the far end of the dam near the head waters. I am paying a visit in the next few days and will fill in more information as the info in the web sites is a little sparse. LAFMA has had their permit to stock extended to include Wyaralong Dam. It is their intention to stock the dam with Mary River Cod ( The focus species ) Australian bass and also Saratoga. At the moment I am sure there will be a abundant supply of Carp, so they will need to be thinned out as soon as possible. Take some Corn in a can and a float and see what you can do. Best if they are killed quickly and disposed of deep in the scrub, or in a trash can, not back in the water. Please do not leave them by the side of the water , not a good look for those who are not so informed about noxious species... See the LAFMA web site for more info.

# Southern Brisbane Sport Fishing Club

## Wyaralong Dam



### Next Meeting Stars and Stripe's Day the 4 th of July

Trevor Saunders will be talking all about Luderick Fishing with some of our club experts giving away a few tips and secrets for the Jumpinpin and region.

# Southern Brisbane Sport Fishing Club

## Mullet on Lures ?

The day after the last meeting Tom Walbeck invited me to go fishing for Jew at the mouth of the Pin Bar at Jumpinpin. Like quite a few of us I guess catching a Jew large enough to take home for a feed, seems to be quite an achievement. This time I hoped under the guidance of Tom I might get lucky! As some of you know Tom runs a charter service based on his 35 ft Cuddles and specializes on trips in and around Jumpinpin and surrounding areas. Having been on his boat as guest for a few days, it is great value. He makes the best sandwiches!!

We were drifting large plastics in the hope of enticing a decent Jew (Mulloway) when a large active pod of fish were going mad a hundred yards (meters if you insist!) We thought Tailor!! so I snapped on a large gold blade and was ready by the time Tom had moved the boat into casting range of the pod. I let one fly as soon as the motor stopped and wound like a crazy man for just a split second. That was all it took to come up tight, it fought well, but was I in for a surprise, it was a good size mullet not a tailor as we thought. It was hooked in the side of the head near the mouth, but who was complaining. Sea run mullet, Umm! Umm! We continued to cast into the pod and kept coming up trumps! The gold blade I was using was definitely getting there attention, some were caught in the mouth but most were snagged near the mouth, the odd one in the tail, boy did they try hard to get away.

Tom changed his small blade, to a large three inch chrome one, and then found a fish that was heading north very very quickly. It took a little while to get this one back to the boat, and you can see why. A 55 cm Mullet!!

Tom donated the fillets of that one for me to smoke, and I can say it was delicious, as was all the other fillets we shared around, even took some to Lloyd as he was supposed to go on this trip, but was on wife looking after duty.. Sue by the way is doing fine and in great spirits as only Sue can be. Mal Brown



Mal the Ed with a big feed!!

Mullet on Blades  
who would of thought?



Tom with his monster 55cm sea run mullet

# Southern Brisbane Sport Fishing Club

## Upcoming Events and Trips

- 10 July Wavebreak
- 23 July Jumpinpin
- Boaties Day at Vic Point Sunday 17th July

## Scouts and fishing ?

Our Mr Lloyd Willman who, in his early years, was a Logan / Beenliegh scout, and just recently he was asked to teach a bunch of local scouts on how to fish, part of the badge system! He had already done a few teaching lessons at the scout hall and was asked if he could do a field day at Mt Cotton Scout Camp. That, when JC and I received the call for help! We piled into Lloyd's 4WD and headed off to Mt Cotton with loads of tackle on board.

There were 10 kids in all with their own rods and reels, some should be on EBAY as antiques, some just not quite describable. Lloyd divided us up into three groups and off we went. We did stuff on nots and bottom tackle and even casting lessons with a collection of Lloyds old wood lures. No hooks I may add!! That was exiting to say the least!!

Mt Cotton scout camp ground is quite large and has two dams situated on the property, so we headed off with a bucket of prawns to practice real fishing. We were told someone had stocked a few Barra in the dams to keep the crayfish down. They had trouble with crayfish burrowing into the dam walls, which of course, they have been known to do.. Down at the dams, fun times for the Scouts and us oldies as well.... May be a barra? To cold? Got to try!!!

Alas!! .. No Barra, no fish, not even a spangle perch. Lots of patience required (not my best thing) but we really enjoyed the day. I know the kids did.... Mal Brown

The Master Scout at work  
 Mr Lloyd Willman Esq



JC Pretending he knows what he is talking about, but he does look the part!!

Thats me (ed) on the right, the Black Shadow taking pics, never look so tall!!



# SBSFC



The club trip to Somerset dam was a bit wet. Not to many fish. A good feed of Red Claw.

Some drama with a broken spring on JC's boat trailer, lucky the locals had a spare..

I left my alcohol behind, thank you guys for your donations!



Note the purple lure...



Right.

Trevor Saunders with a banded grunter on one of his Blades.



A trip around the Pin with JC and I



JC the Sand Bank Robber  
So Cold!!



Starting out size Big Lure Small fish

Glen Lyon Dam  
Murry Cod  
Mal Brown



Getting bigger

# Southern Brisbane Sport Fishing Club



Brad with a really good snapper, Well done!



For those that are interested this is the new Logo for LAFMA

## Fishing License

**What do you think?**

**Do we need one?**

**What can it do for us  
the Fisher People**



## Club Logos for Shirts and Stickers for Boats

Michael James has had a number of large and small boat stickers printed, and these are available for sale at every meeting.  
COST- Small \$1; Large \$5

Just a reminder - for \$10.00 you can have the SBSFC logo embroidered onto your own shirt. Bring your dress shirt / polo shirt or fishing shirt to the meeting with \$10.00 and it will be back at the following meeting. The \$10.00 fee includes a \$1.00 levy that will go towards reimbursing the club for the \$75.00 set up cost.

### Classifieds

**For Sale-** Motorguide Bow mounted electric motor, Foot Control. Hardly Used! 54lbs freshwater model. \$350. Good Condition.  
Contact Mal on 0402 901 511

**For Sale-** Fly Fishing Vest (Made by Englands) Polar Insulated and fitted with an inflatable Life preserver Pull to inflate or inflates on water submersion. Short Type, Green and in a as new condition. Size M. Original Purchase price 350 English pounds. Offers .Contact Mal on 0402 901 511

**For Sale-** Fly fishing rods and reels plus other jackets Contact Mal on 0402 901 511

# Southern Brisbane Sport Fishing Club

## Lending Library List

The club library has the following items available for borrowing by the members. They are available at our monthly club meetings. A \$20 deposit will be required please, just to make sure they come back at the next meeting.

ET's Bass and Barra Fishing	Flathead Study (cd-rom)
Gently Does it when releasing fish - booklet and DVD	Queensland's Offshore Fishing Guide (NAFA / Tourism Queensland)
Gillies Introduction to Fly Fishing	Evinrude Etec DVD
Squidgy Secrets - Part 1 Basics	Zed Lure field test series 2004 parts 1 to 4
The Kayak Fishing Video (On DVD)	Fishing DVD volumes 1, 2 & 7
Basic Bait Fishing (DVD)	Ray Bricknell's Kimberly Barra Adventure DVD
Queensland's Freshwater Fishing Impoundment Guide (NAFA / Tourism Queensland)	

### NOTE: - *The Bowls Club has a Bar.*

Serves tea and coffee, also has food if you get there early. Plenty of parking.

### Swap or sell table

**Please remember the gear swap table at the meeting – bring your swaps or items for sale.**

**This can be a great club facility if we all use**

**New Members please note meetings start at 7.00pm on the first monday of the month.**

Prospective Members reading this Newsletter will be made very welcome at any Club meeting – so please come along and check us out at our next meeting on the first Monday of the month at 7:00pm. Single membership - \$60.00 p.a. Family Membership - \$80.00 p.a. Student (over 16) - \$20.00 p.a. Child (under 16) no parent in club- \$20.00 . Child (under 16) parent in club- \$10.00

### USEFUL NUMBERS & WEB SITES:

SE Qld Boating Weather 1300 360 428: Qld Marine Warnings 1300 360 427: Fish watch Hotline 1800 017 116  
 Bureau of meteorology <http://www.bom.gov.au/index.shtml>: Sweetwater fishing <http://sweetwaterfishing.com.au/>  
 Crab pot Theft Hotline 1800 017 116: Bonzer imports <http://www.bonzerimports.com/>  
 Coast watch [www.coastwatch.com.au](http://www.coastwatch.com.au): SEQ kayak fishing <http://members.optusnet.com.au/aus-kayak-fishing/>  
 Southern Brisbane Sportsfishing Club <http://www.sbsfc.org/>

### SPECIAL DEALS FOR OUR MEMBERS

#### Danny Hughes -Fishing Tackle Restoration

He also has 2<sup>nd</sup> hand good quality reels & rods for sale at all times. He does the Reel / Rod Repairs for Mossop's, Fish Head etc. **Call Danny on Mobile Ph 0438 012 629**

R.T.L. Trailers Very economical trailer manufacture and repairs a good tradesman too. **Call Mark on 3287 4241**

Yatala Outboard Wrecking Gary and Trent specialising in used parts to suit all outboard makes and models.

They also do repairs and service work. 7 Old Pacific Highway, Yatala. [www.outboardwrecking.com.au](http://www.outboardwrecking.com.au) **Call 38072488**

#### Gem Bait and Tackle

OPEN 7 DAYS.... 281 JACOBS WELL ROAD, ALBERTON 4207 PHONE 3287 3868 FAX 3807 8018

Monday to Friday 5.00am – 7.00pm Saturday & Public holidays 4.30am – 7.00pm Sundays 4.30am – 6.00pm

Petrol. Oil. Diesel. LP Gas. Groceries, Fruit, News Agency, Takeaways, Ice, Tackle, Fresh and Frozen bait, Dip Permits, NSW licences